

The Suffolk Center on the Holocaust,  
Diversity and Human Understanding, Inc.  
proudly presents

# EMBRACING OUR DIFFERENCES™ LONG ISLAND

The purpose of the Embracing Our Differences™ exhibit is to promote respect for human rights.



Together with related activities and events, the Embracing Our Differences™ art exhibition expresses diversity and enriches lives.

We invite you to submit your work and participate in creating a more inclusive society. Selected artwork will be enlarged to billboard size and displayed.

**Deadline to submit artwork is  
May 26, 2016**

 [Facebook.com/CHDHU](https://www.facebook.com/CHDHU)

 **Embracing Our Differences - Long Island**

The mission of the Suffolk Center on the Holocaust, Diversity and Human Understanding, Inc., is to educate our community on historical events, and to promote cultural understanding and respect for human dignity.

## OUR COMMUNITY PARTNERS



The Suffolk Center on  
the Holocaust, Diversity  
and Human Understanding, Inc.

### BOARD OF DIRECTORS

Rabbi Steven Moss  
Chairperson  
Veronica Treadwell  
Vice Chair/Secretary  
Hon. Robert Sweeney  
Treasurer  
Steven Schrier  
Executive Director  
Glenn Gordon  
Eleanor Kra  
Shirley Levitt  
Andrew Liput  
Dr. Shaun L. McKay  
Sonia Palacio-Grottola  
Melisa Rousseau  
Dr. Vicki Wacksman

### ARTS AND EDUCATION COMMITTEE

Grace Barrett  
Carol Brown  
James Byrne  
Sonia Palacio-Grottola  
Allen Keener  
Steven Klipstein  
Roberta Richin  
Bette Schneiderman  
Patricia Snyder  
Joanne Spencer  
Meredith Star  
Steven Taub  
Allyson Uttendorfer  
Joy Weiner

533 College Road, Selden, New York 11784  
631-451-4700  
[www.chdhu.org](http://www.chdhu.org)  
Email: [chdhu@sunysuffolk.edu](mailto:chdhu@sunysuffolk.edu)



SEEKING SUBMISSIONS  
FOR THE 10<sup>TH</sup> ANNUAL  
OUTDOOR ART EXHIBITION  
CELEBRATING DIVERSITY



**EMBRACING  
OUR  
DIFFERENCES™  
LONG ISLAND  
2016**

Open to students, professionals  
and amateurs of all ages



Hosted by the  
Suffolk Center on the Holocaust,  
Diversity and Human Understanding, Inc.



Submit work that interprets and explores one of these themes...

- The struggles and joys of living in a diverse community
The impact of prejudice and hatred on human dignity
The varied people, cultures and perspectives in our world



Final selections will be based on...

- Artistic excellence
Addressing the themes above

You are encouraged to...

- Submit artwork that is relevant to Long Island
Use bold, saturated colors and strong lines

Artwork will be evaluated on...

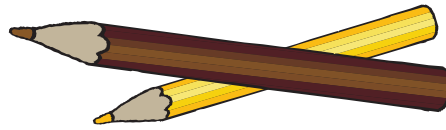
- How effectively it will read outdoors when enlarged to billboard size (16' wide by 12' high)

Final selections (by category) will be made by professional artists, curators and art professionals.



Long Island artists, professionals, amateurs, photographers, teachers and students of all ages.

- Artists are encouraged, but not required, to collaborate with artists in their own or other disciplines
Please follow the guidelines when submitting your work
You may submit up to three entries, however, no more than two images per artist will be chosen for display



Here are the requirements...

Send a CD or DVD with your artwork. Save it as follows:

- File size: 12.8" wide by 8.8" high (borders are acceptable)
File resolution: 410 DPI or higher
File format: JPEG
Print your name and artwork title clearly on a CD or DVD

Complete and sign the release form.

Mail the CD or DVD and signed release form by May 26, 2016 to:

CHDHU
533 College Road, L-102
Selden, NY 11784

Please include a signed release form for each artist involved in the development of the artwork.

Technical assistance is available!

Submit your questions or requests to:
chdhu@sunysuffolk.edu
Telephone: 631-451-4700
Fax: 631-451-4697



Please return a copy of this completed form indicating your acknowledgment that...

- Your submission is original in conception and execution and is not a copy or reproduction of any other work.
CHDHU has your irrevocable permission, without restriction, to use your work in reproduction for display, catalogs, posters, advertising, commercial use, educational and promotional materials for this event as well as other events as CHDHU may determine in its sole and absolute discretion.
Art submissions will not be returned.

Title of Artwork: \_\_\_\_\_

Artist Name(s): \_\_\_\_\_

Artist statement of how the work addresses the theme: (please limit to one sentence - it will appear on the banner)

Artist signature(s): \_\_\_\_\_

Parent signature: \_\_\_\_\_ (for minors)

Street address: \_\_\_\_\_

City: \_\_\_\_\_

State: \_\_\_\_\_ ZIP code: \_\_\_\_\_

Email: \_\_\_\_\_

Daytime telephone: (\_\_\_\_\_) \_\_\_\_\_

School: \_\_\_\_\_ (if applicable)

Teacher's Name: \_\_\_\_\_ (if applicable)

I am a (an)...

- professional amateur
college/adult student other

Additional release forms are available online at: chdhu.org